



GAT MONTHLY MEMBERSHIP PROGRESS REPORT

Results as of: 6/30/2023

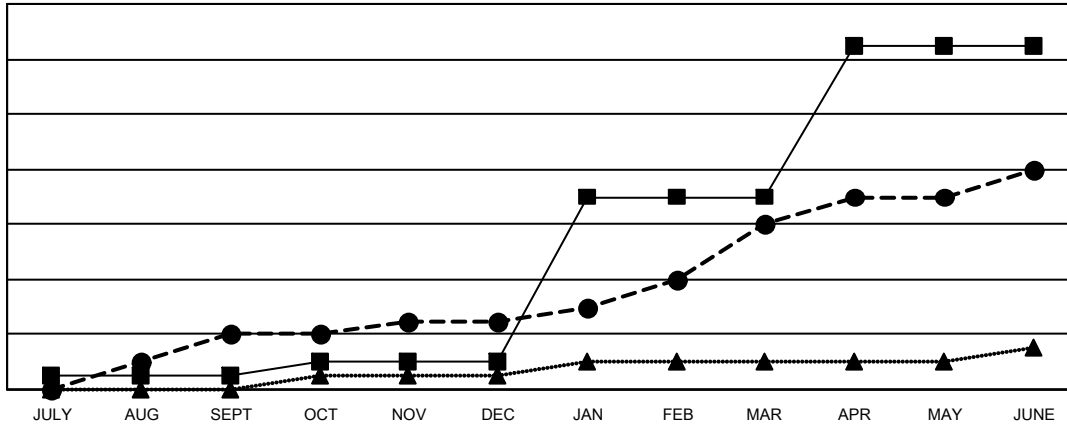
Multiple District 201

LOCATION: AUSTRALIA

Clubs			
RESULTS FOR 2022-2023			
QUARTER	NEW CLUB GOAL	NEW CLUBS	DROPPED CLUBS
JULY/AUG/SEPT	1	4	7
OCT/NOV/DEC	1	1	7
JAN/FEB/MAR	12	7	0
APR/MAY/JUNE	11	4	13

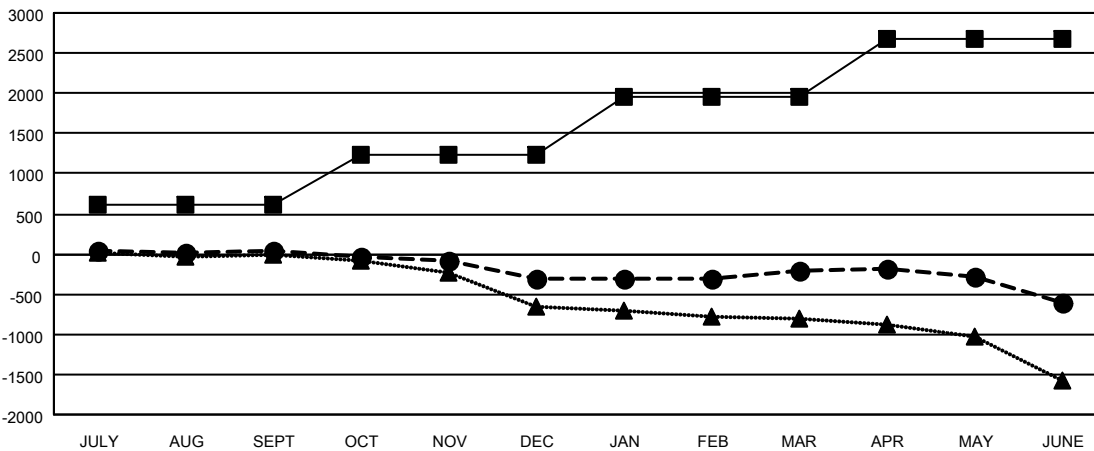
Members			
RESULTS FOR 2022-2023			
QUARTER	MEMBER GROWTH NET GOAL	MEMBER GROWTH ACTUAL	DROPPED MEMBERS ACTUAL (including transfers)
JULY/AUG/SEPT	618	794	634
OCT/NOV/DEC	612	603	848
JAN/FEB/MAR	732	902	705
APR/MAY/JUNE	713	929	1,175

GOALS AND ACTUAL NEW CLUBS CUMULATIVE



- CURRENT YEAR GOALS FOR NEW CLUBS
- CURRENT YEAR ACTUAL NEW CLUBS
- ▲- LAST YEAR ACTUAL NEW CLUBS

GOALS AND ACTUAL MEMBERS CUMULATIVE



- MEMBER GROWTH NET GOAL
- MEMBER GROWTH ACTUAL
- ▲- LAST YEAR MEMBERSHIP ACTUAL

DROPPED CLUBS: 27	771 CLUBS OF 1173 ADDED 1 OR MORE NEW MEMBERS	GENDER DISTRIBUTION
DROPPED MEMBERS	CLICK HERE FOR CUMULATIVE MEMBERSHIP DATA	MALE 13,890 (62.51%)
DECEASED 369		FEMALE 8,318 (37.44%)
CLUB CANCELLED 21		NON BINARY 6 (0.03%)
OTHER 2,972		PREFER NOT TO ANSWER 5 (0.02%)
TOTAL 3,362		TOTAL FAMILY UNIT MEMBERS 3,371
		FAMILY MEMBERS PAYING HALF DUES 1,714